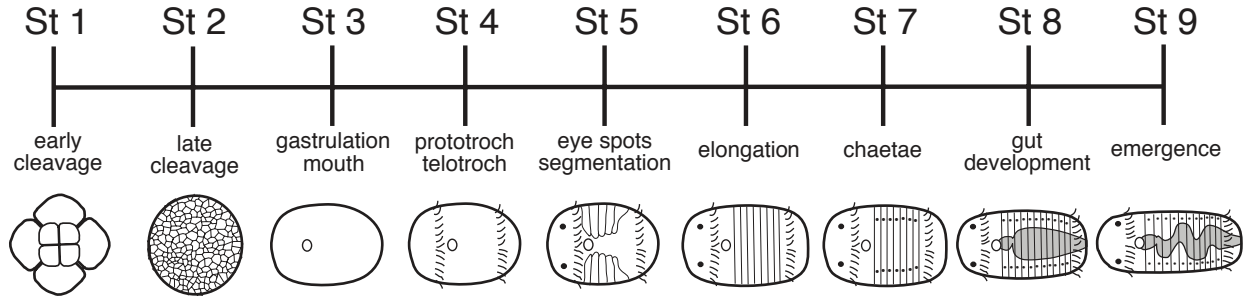


Capitella teleta development



Note: additional details of *Capitella* development are described in:

Seaver, E. C., Thamm, K. and Hill, S. (2005). Growth patterns during segment formation in the annelids *H. elegans* and *Capitella* sp. I: comparison of distinct life history stages in polychaetes. *Evolution and Development* 7(4): 312-326.